



Online courses to support remote teaching now available!

PLAN FOR REMOTE LEARNING - MINIMIZE LOST INSTRUCTIONAL TIME!

Your school year was suddenly impacted.
You transitioned to remote learning.
Planning and instruction looks different.
Navigating learning gaps will be critical.
A plan for back to school is likely on your mind.

NEW! Live Online Professional Learning:

- Navigating Unpredictable Learning Environments
- Planning for Effective Remote Learning



We can help your teachers get ready.

Live Online Courses and Coaching

Our team of highly certified coaches are here to support you to address your most immediate needs in live online courses and coaching below.

Navigating Unpredictable Learning Environments *Live Online Course*

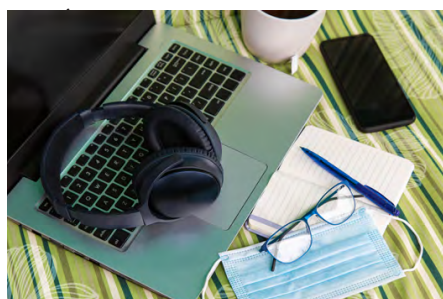
Establish a safe and responsive learning environment

- Determine realistic and manageable learning
- Build a safe and responsive learning plan
- Identify student academic and social emotional needs through formative assessment
- Address opportunity gaps through a focus on access and equity
- Apply new strategies to foster self-directed learning
- Implement differentiation strategies in an unpredictable learning environment
- Leverage instructional resources in new ways
- Develop a process for continuous reflection and improvement

“ We can use everything we learned today immediately. We feel supported and empowered to forge ahead with HMH at our side.

Planning for Effective Remote Learning *Live Online Course*

Strategic planning for your students' unique learning



- Create realistic and manageable learning goals
- Design plan and determine strategy for at home support
- Develop learning experiences that spark students' interests
- Plan for digital and non-digital learning
- Implement methods for flexible learning
- Create an equity focused learning plan to support each and every student

Ensure Success for the Entire Year

Tackle these unpredictable times head-on with this package

- Includes the 2 live online courses above:
 - Navigating Unpredictable Learning Environments
 - Planning for Effective Remote Learning
- 8 live online coaching sessions
- Includes access to our *award-winning* Coaching Studio platform where ongoing collaboration occurs with your team and your coach

*Each course is 6 total hours delivered in live online sessions

*For up to 35 teachers.

*Flexible scheduling is available.



Plan your professional learning now!

LEARN MORE

Robin M. Lauer
Account Executive, Virginia
757-575-5952
robin.lauer@hmhco.com